



Yeo Street, London, E3

BUTLER & STAG



**This impressive large and light apartment is only a short walking distance to Devons Road & Langdon Park DLR stations, or a further few minutes to Bromley-by-Bow Tube station (District & Hammersmith & City), access to central London & the City is only a few moments away.**



- One bedroom
- Private balcony
- Communal Roof Top terrace
- Fantastic condition
- One bathroom
- 24 Hour Concierge
- Close to Transport
- Discount Gym Membership

This modern apartment is finished to a high specification throughout. The open plan kitchen living area is spacious and comes with fully integrated appliances and access to the private balcony. The double bedroom is a generous size and would allow enough room for a desk. The three piece bathroom is finished to a good standard. The property also benefits from ample storage.

Both Devons Road DLR and Bromley-by-Bow stations are within a short stroll, whilst the restaurants, bars and shopping facilities of Canary Wharf are also easily accessible.

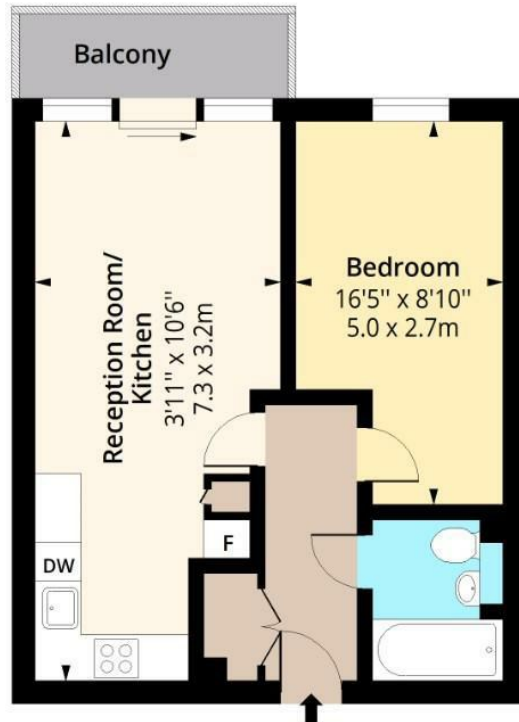




# Caspian Wharf, E3

## First Floor

Approx. 44.50 Sq. meters (479 Sq. feet)



Total area: approx. 44.50 Sq. meters (479 Sq. feet)  
For illustration purposes only - not to scale  
[www.lpaplus.com](http://www.lpaplus.com)

**BUTLER & STAG**

☎ 020 8102 1236

🏠 508 Roman Road, Bow, London, E3 5LU

✉ [bow@butlerandstag.com](mailto:bow@butlerandstag.com)

[www.butlerandstag.uk](http://www.butlerandstag.uk)

IMPORTANT NOTICE - These particulars have been prepared in good faith and they are not intended to constitute part of an offer or contract. We have not performed a structural survey on this property and the services, appliances and specific fittings have not been tested. All photographs, measurements, floor plans and distances referred to are given as a guide and should not be relied upon.